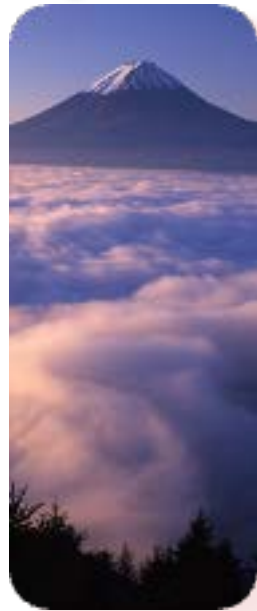


FUEFUKI

Beyond Imagination



AGENDA

1 / 6

Access

4 / 6

Accommodation

2 / 6

Spots

5 / 6

Others

3 / 6

Experiences
and Events

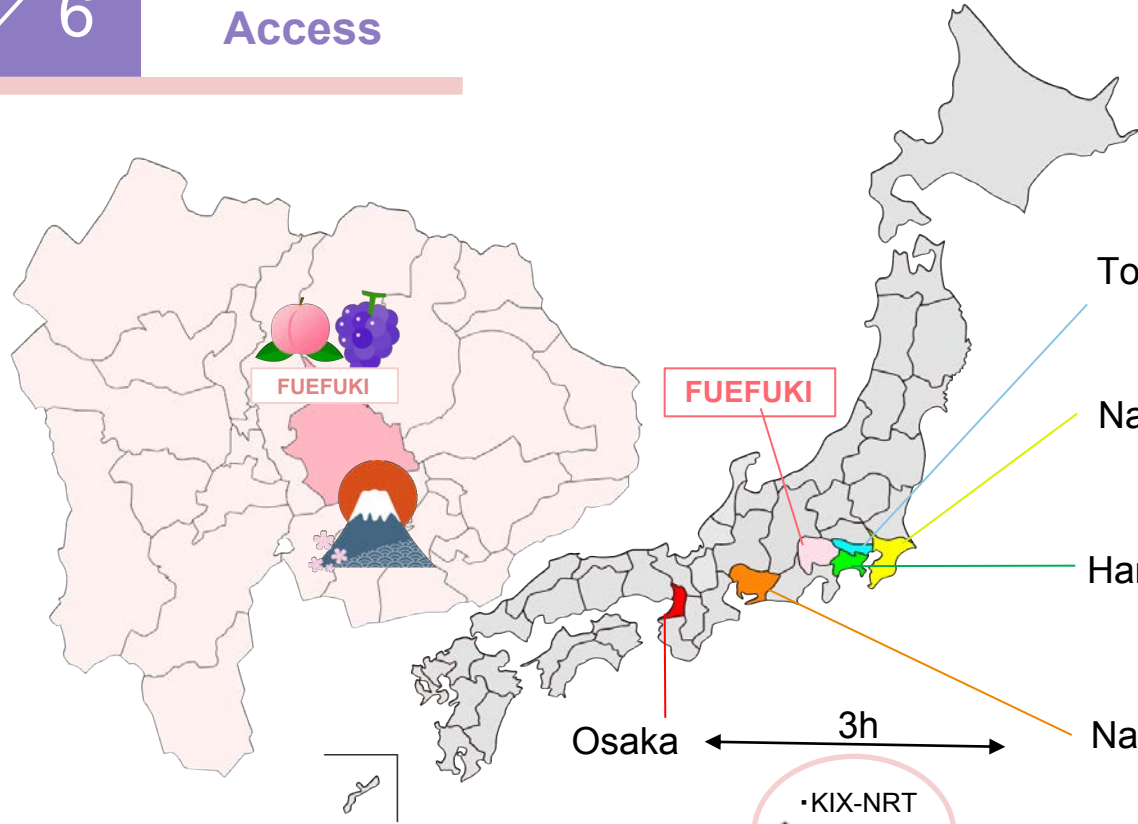
6 / 6

Model Routes

ACCESS

$$\frac{1}{6}$$

Access



- NRT-NRT
- HND-HND
- NRT-KIX
- NRT-NGO

2h15m by Bus
2h30m by Train

3h15m by Bus or Train

2h30m by Bus or Train

4h by Bus or Train

- KIX-NRT
- NGO-NGO
- NGO-NRT

SPOTS

2 / 6

1. Fujiyama Twin Terrace

~Panorama of Mt Fuji from Terrace~

- Open : 9:00~16:00
- Admission fee : JPY200(Shuttle bus one way)
- 30 mins from car park by Shuttle bus
- You can enjoy Mt. Fuji in each seasons
 - Inquire for groups



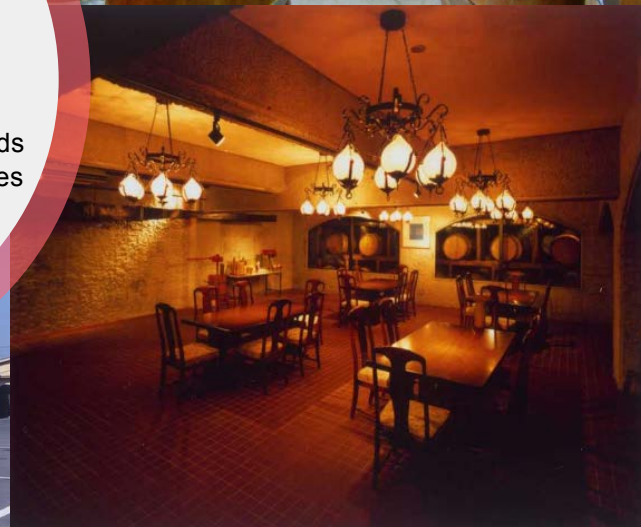
2 / 6

Spots



2. Mars Wine Factory

- Open : 9:00~16:30
- Admission Fee : Free
- Regular Holiday : 31st December
- About 90,000 visitors each year
- Free wine tasting, grape juices for kids
- Experience the tasting which requires charge need to be reserved
 - Short Guided tour



2 / 6

Spots

3. Monde Wine Factory

- Open : 9:00~16:30
- Admission Fee : Free
- Regular Holiday : 28th Dec to 5th Jan
- Free wine tasting, grape juices for kids
 - Reservation needed for groups
 - Short Guided tour
 - You can buy canned wine at seven eleven





EXPERIENCES
and EVENTS

3
/
6

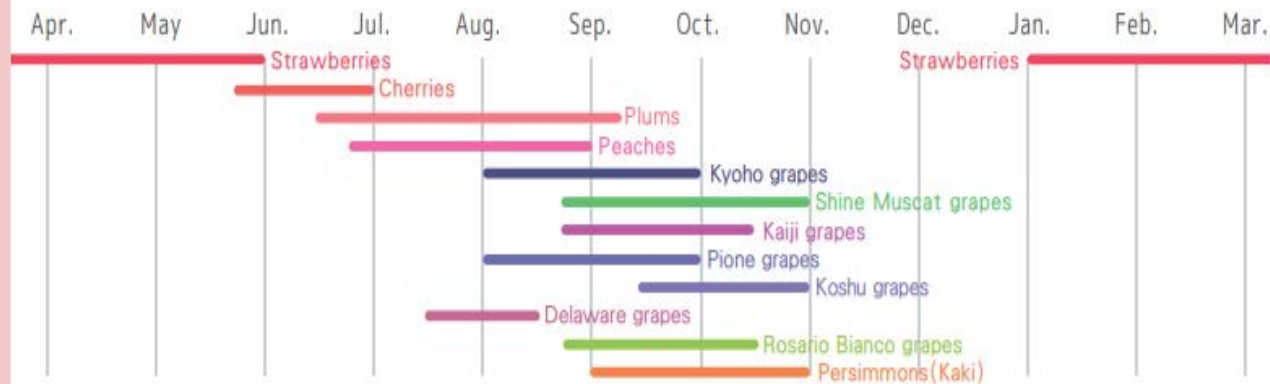
3

6

Experiences



Fruit Calendar



1. Fruit Picking

- Open (Miharashi Farm) : 8:00~17:00
- Open (Misaka Farm) : 8:30~17:00
- Fruits : Cherry, Peach, Grape etc
- Other fruits can be picked at Other farms



Miharashi Fruit Farm

Misaka Fruit Farm

3

6

Experiences

2. Outdoor BBQ

- Open : 8:30~17:00
- Place : Misakanoen Farm
- Price : 1,700JPY / person
- You can enjoy the fruit picking there too

3. Flower Park

- Open : 8:00~18:00
- Admission Fee : Free
- Kinoen : Charged only in besides Apr
- Place : Yatsushiro Furusato Park / Sakura Onsen Street (1km) / Kinoen
- You can see the Peach Flowers for 1 week after Sakura fall.
(the first of Apr ~ around 10th Apr)
- *Sakura : the end of Mar

3

6

Events



1. Kawanakajima Sword Battle

- Time : 9:00~15:00 October every year
- Place : near Fuefukigawa River
- Free Watching / Charged for participation
 - Reservation needed for participation (few months before the event)
 - Participation Fee : 5,000 JPY / person
 - About 600-700 participants join every year



3

6

Events



2. Sakura Onsen Street Illumination

- Time : 18:00 ~ 22:00
Dec to Feb
- Place : Chikatsugawa River at Isawa Onsen area
- Admission Fee : Free



3. Ukai (Cormorant Fish) Catching

- Time : 20:00 ~ 20:50
Wed, Thu, Sat, Sun, Jul to Aug
- Place : Fuefukigawa River
- Free shuttle bus from hotel
- Only the place can watch Ukai Catching for free



3

6

Events

4. Isawa Onsen Fireworks Festival

- Time : 19:30~21:00, the mid of Aug
- Place : Fuefukigawa River
 - Free watching
 - About 10,000 shots
 - Free Shuttle bus
by near Isawa Hotel
- Can see from the room in
Isawa Onsen

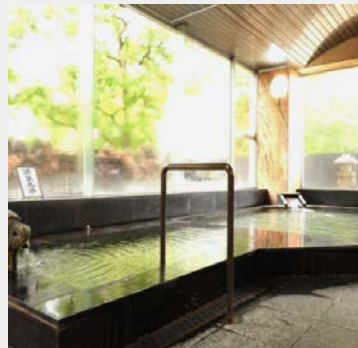
宿

ACCOMMODATION

4

/

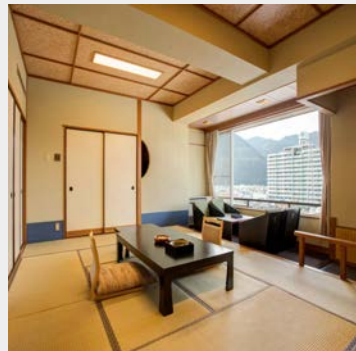
6



1. Hotel Kai Resort

- 3 star
- Japanese / Western Room Based
- Size : from 18m²
- Dinner : Buffet style
(all you can eat Crab can be requested)
- Traditional garden outside
- Price : from 10,000JPY / person
(2 meals included)

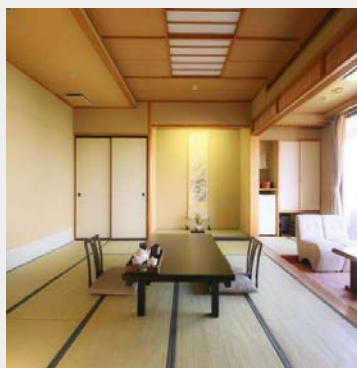
**After the situation settled,
the price will be changed.



2. Hotel Hatta

- 3,5 star
- Japanese Room Based
- Size : from 18m²
- Dinner : Japanese Set Menu (Kaiseki)
- Famous for Wine hot springs
- Traditional garden, Koi fish outside
- Price : from 13,000JPY / person (2 meals included)

**After the situation settled, the price will be changed.



3. Hotel Kohakuen

- 3,5 star
- Japanese Room Based
- Size : from 18m²
- Dinner : Japanese Set Menu (Kaiseki)
- Traditional garden outside
- Price : from 15,000JPY / person (2 meals included)

**After the situation settled,
the price will be changed.

OTHERS

5

/

6

Others



Mochi Cake with special sauce Kikyoya



Fruits, wines for souvenirs



Shopping at Donkijote

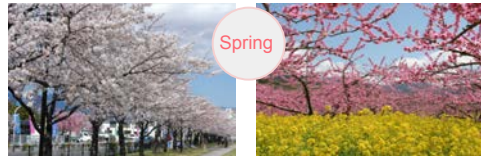
MODEL ROUTES

$$\frac{6}{6}$$

6

6

Model Routes



Spring



Summer



Tokyo-Fuji-Tokyo (NRT-NRT, HND-HND)

2 nights 3 days or 3 nights 4 days

Tokyo-Fuji-Nagoya/Osaka (NRT-KIX)

4 nights 5 days or 5 nights 6 days



6

6

Model Routes



Autumn



Winter

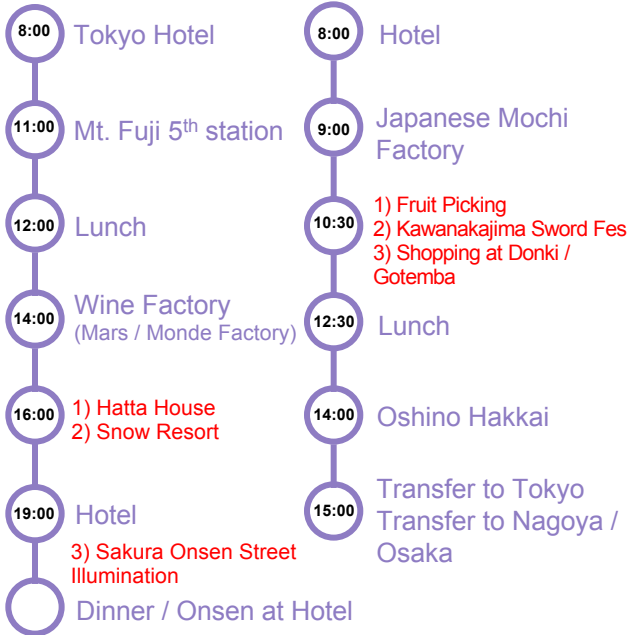


Tokyo-Fuji-Tokyo (NRT-NRT, HND-HND)

2 nights 3 days or 3 nights 4 days

Tokyo-Fuji-Nagoya/Osaka (NRT-KIX)

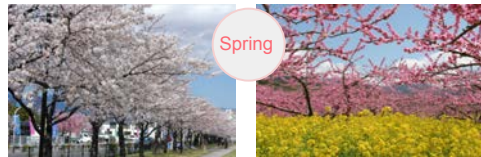
4 nights 5 days or 5 nights 6 days



6

6

Model Routes

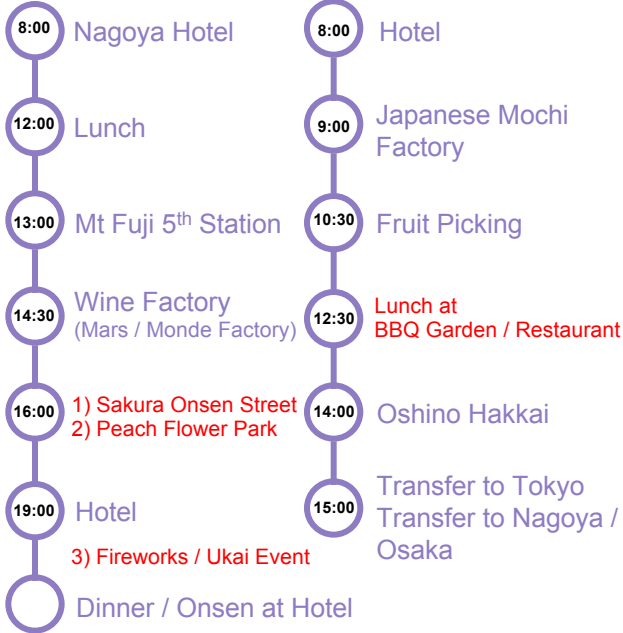


Osaka/Nagoya-Fuji-Tokyo (KIX-NRT)

4 nights 5 days or 5 nights 6 days

Nagoya-Fuji-Tokyo

(NGO-NRT, NGO-NGO) 3 nights 4 days



FUEFUKI

Beyond Imagination



Q&A

●Shindo Terrace

- Open : the end of July 2021
- Regular Holiday : -
- Admission Fee : JPY200(Shuttle bus one way)
- Capacity : -
- 20 minutes from car park by Shuttle bus
- You can enjoy both morning views and night views

●Misakanoen Farm

- Open : 8:30~17:00
 - Regular Holiday : Depends on seasons
 - Capacity : -
 - Outdoor BBQ : from 1,700 JPY / person
 - Fruit picking : from 1,300 JPY / person
 - Reservation needed for groups
 - Season Fruits : Peach, Grape
- <https://misakanoen.co.jp/>

●Event : Kawanakajima Sword Battle

- Time : 9:00~15:00 Oct / Nov every year
 - Place : near Fuefukigawa River
 - Free watching
 - Free Watching / Charged for participation
 - Reservation needed for participation (few months before the event)
 - Participation Fee : 5,000 JPY / person
 - About 600-700 participants join every year
- <http://fuefuki-kanko.jp/content/kawanakajima/>

●Event : Isawa Onsen Fireworks Festival

- Time : 19:30~21:00 on the mid of Aug
- Place : Fuefukigawa River
- Free Watching
- About 10,000 shots¥¥

●Mars Wine Factory

- Open : 9:00~16:30
 - Regular Holiday : 31st Dec
 - Admission Fee : Free
 - About 90,000 visitors each year
 - Wine tasting for free with many kind of Wines, Grapes juices for kids
 - Rewarded Wine Tasting is charged and need to be reserved
- <https://www.hombo.co.jp/company/kura/yamanashi.html>

●Sakura Onsen Street

- Open Daily : 8:00~18:00
 - Admission Fee : Free
 - Sakura Season : the end of Mar to the mid of Apr
- <https://fuefuki-syunkan.net/kaika/sakura/sakuraonsen>

●Sakura Onsen Street Illumination

- Time : 19:00~22:00 on Dec to Feb
 - Place : Chikatsugawa River at Isawa Onsen area
 - Admission Fee : Free
- <https://www.porta-y.jp/event/27683>
**Previous website

●Event : Ukai (Cormorant Catching)

- Time : 20:00 ~ 20:50 Jul to Aug
 - Place : Fufukigawa River
 - Free shuttle bus from hotel
 - Only the place can watch Ukai Catching for free
- <https://www.isawa-kankou.org/sightseeing/ukai/>
**Previous website

●Monde Wine Factory

- Open : 9:00~16:30
 - Regular Holiday : 28th Dec ~ 15th Dec
 - Admission Fee : Free
 - Reservation needed for groups
 - Wine tasting for free with many kind of Wines, Grapes juices for kids
- <https://www.mondewinery.co.jp/>

●Yatsushiro Furusato Park

- Open Daily : 8:00~18:00
 - Admission Fee : Free
 - Peach Flower Season : the first of Apr ~ 10th Apr
- https://www.yamanashi-kankou.jp/kankou/spot/p1_4804.html

●Hotel Hatta

- 3,5 star
 - Japanese Room Based
 - Size : from 18㎡
 - Dinner : Japanese Set Menu
 - Famous for Wine hot springs
 - Traditional garden, Koi fish outside
 - Price : from 13,000JPY / person (2 meals included)
- <https://hotel-hatta.co.jp/>

●Hotel Kai Resort

- 3 star
- Japanese / Western Room Based
- Size : from 18㎡
- Dinner : Buffet style (all you can eat Crab can be requested)
- Traditional garden outside
- Price : from 10,000JPY / person (2 meals included)

<https://breezbay-group.com/kai-resort/>

●Miharashi Farm

- Open : 8:00~17:00
 - Regular Holiday : Depends on seasons
 - Admission Fee : 1,100 ~ 1,400 JPY / person
 - Fruit : Peach, Grape
 - Reservation needed for groups
- <https://www.vamanashi-kankou.jp/kankou/spot/e-06.html>

●Kinoen Park

- Open : 9:00~17:00
 - Regular Holiday : Depends on seasons
 - Admission Fee : Depends on the fruit
 - Fruits : Cherry, Peach, Grape
 - Reservation needed for groups
 - Free watching at flower park
- <https://www.yamanashi-kankou.jp/kankou/spot/e-02.html>

●Hotel Kohakuen

- 3,5 star
 - Japanese Room Based
 - Size : from 18㎡
 - Dinner : Japanese Set Menu
 - Traditional garden outside
 - Price : from 15,000JPY / person (2 meals included)
- <http://www.kohakuen.co.jp/en/>

●Kikyoya Shingen mochi Factory

- Open : 9:00~16:00
- Regular Holiday : -
- Admission Fee : Free
- Limited offer on all you can carry Mochi from 9:00 everyday
- Factory tour : 20min
- Reservation needed for groups

<http://themepark.kikyouva.co.jp/info/>